

Product Guide 2012



light years ahead



electronic navigation

smarterchart plotters
electronic compasses
and pc software

AIS Class A & B

smartertrack ais
products

on board PCs

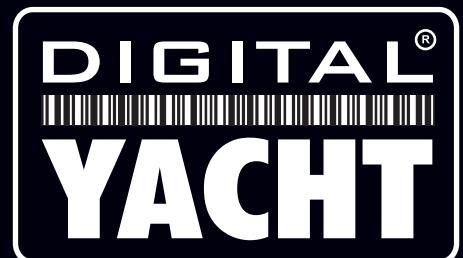
Aqua
marine PCs

wireless internet

high power
wifi systems

BOATraNET

next generation navigation
wireless server



AQUA STANDARD PC

Compact 12v Marine PC

Aqua PC is designed as a general purpose, great value on board PC. With the latest ultra low power, fanless, Intel Atom N270 processor (2.5W) the complete Aqua PC system typically consumes just 20W but provides all of the performance needed to run navigation software, e-mail, surf the web, etc. All Aqua PCs can be connected directly to the boat's 12v or 24v DC supply with no inverter and all models can be switched on/off either from the front panel switch or from a remote push button switch (not supplied). Can be supplied with optional built-in Hi-Power Wi-Fi adaptor or built-in NMEA 2000 Gateway.

KEY FEATURES

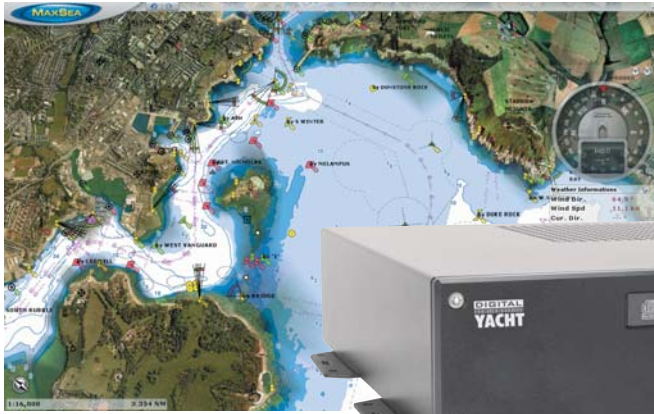
- 12/24v DC, ultra rugged, fanless marine PC
- Compact - measures just 30 x 27 x 7cm!
- Easy mounting and installation
- Fitted with CD/DVD RW
- Supplied with Windows 7 (on UK versions) - Linux version also available
- 2 x NMEA Ports and 3 x USB Ports
- Intel Atom N270 processor for low power consumption and fast computing
- 160GB hard drive fitted in Anti-Vibration mount



AQUAPRO 2 PC

Compact 12v Marine Navigation PC

Designed specifically for high speed, demanding 3D charting and bathymetric applications, AquaPro 2 has been successfully tested on the latest MaxSea TimeZero technology. For exceptional performance it uses the latest AMD Fusion APU technology, with 8GB RAM, 6 USB ports (including 2 x USB3.0), Windows 7 (64 bit) as standard. It can be fitted with an internal 4 port isolated NMEA interface with built in multiplexing functions, allowing complex NMEA systems to be integrated with the PC.



KEY FEATURES

- 64GB solid state hard drive, 8GB RAM
- Latest AMD A6-3500 processor
- Optimised for graphics-intensive navigation software
- 802.11n wireless adaptor for easy networking
- 6 x USB Ports
- 1090P HDMI output, Dolby 7.1 surround sound

ALL AQUA PCs SUPPLIED WITH

0.75m power/IO cable, bulkhead and desktop mounting brackets, SmarterTrack Lite software, driver CD. Aqua Nav PC also includes a navigation IO cable and GPS smart antenna

T112

12in Marine Touchscreen Monitor

A compact 12v DC high resolution 1024x768 LCD touch screen with VGA, DVI and composite video input. Supplied with flush mount kit and software. Touch screen operation requires a USB connection to the PC.



KEYBOARDS

KB05 - Great compact USB keyboard that doesn't take up too much chart table space. Inbuilt 2 port USB hub, great for connecting dongles or memory sticks where getting access to the PC may be difficult.



KB55 - Wireless keyboard with inbuilt trackball, ideal for use in rougher seas where you can brace yourself against a bulkhead and hold the keyboard in your hands, operating the trackball with your thumb.



USB TO NMEA

USB To NMEA Adaptor

Bi-directional NMEA to USB Adaptor which works on PCs, Mac and Linux computers and converts NMEA 0183 data used by many marine systems into a USB format that can be plugged into most modern computers. It supports traditional 4800 baud data or the higher speed 38400 baud rate used by AIS systems.



KEY FEATURES

- Plug and play connection to most PCs, Macs and Linux computers
- Bidirectional data conversion
- Inbuilt data indicator lights
- Multiple adaptors can be used with the computer
- Supports 4800 or 38400 baud rate

SUPPLIED WITH 1.8m cable, driver CD, SmarterTrack Lite AIS software

GPS105

12 Channel WAAS/EGNOS GPS

Rugged, waterproof high sensitivity GPS ideal for use with DSC radios, radar, chart plotters or any other devices that require GPS data. Simple connection and zero configuration make it easy and reliable to install and use. Use with DigitalYacht's USB-NMEA adaptor cable to interface with a PC.



KEY FEATURES

- Suitable for 12v and 24v systems
- Low power consumption < 150mA
- On-board rechargeable battery
- Interference filter for radar and VHF channels
- NMEA 0183 v2.20 output

SUPPLIED WITH

Integral 1in 14TPI threaded base and 10m cable

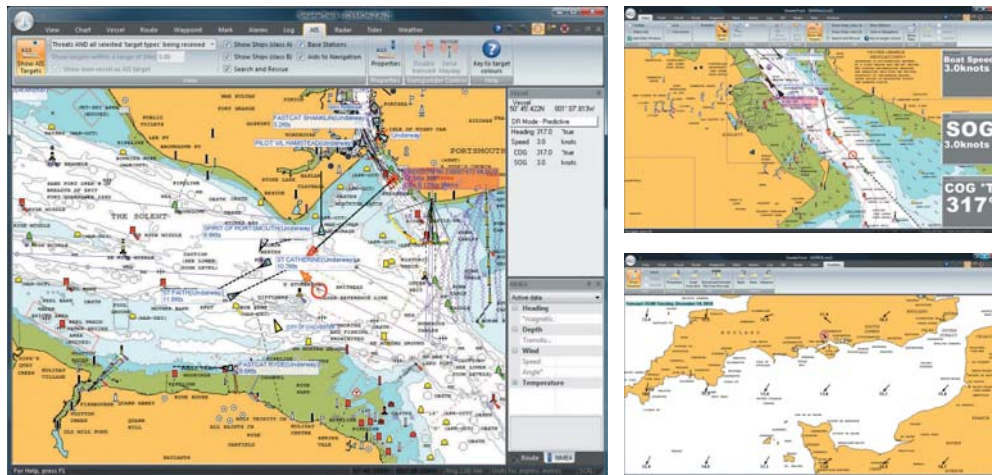
Navigation Equipment

SMARTERTRACK

Navigation Software

Ideal for anyone with a dedicated chartplotter using Navionics Gold, Platinum or Platinum+ chart cartridges or is new to electronic charting and wants simple to use PC navigation software with excellent AIS support.

SmarterTrack turns your Windows XP/Vista/7 PC into a navigation tool that overlays your position and AIS targets onto the chart. AIS features include colour coded targets, user selectable target labelling, fully configurable CPA and TCPA alarms, visual indication of CPA, AIS targets drawn to scale and more. Programming routes, checking tides, depths or nav-aids on the chart and a host of other navigation tasks can be performed simply and effortlessly.



KEY FEATURES

- NMEA2000 compliant version available
- Customisable instrument displays
- Weather overlays (GRIB files)
- Displays all NMEA instrument data
- Transfer route and waypoints to your chartplotter
- Optimum departure time capability from tidal data
- Full set of configurable alarms
- Will display wireless NMEA0183 data from iAIS, WLN10 and Boatranet products

SUPPLIED WITH

Navionics USB cartridge reader, USB to NMEA2000 interface (NMEA2000 version only), CD-ROM, manual

WLN10 & WLN10HS

Wireless NMEA Server

Innovative and cost effective wireless device which creates its own 802.11b+g wireless access point which any other wireless device can connect to, such as a Smart Phone, Netbook or Laptop. Connect it to any device or system that has an NMEA0183 output - either 4800 baud (WLN10) or 38,400 baud (WLN10HS) and it'll automatically read the data and transmit it wirelessly to another device via TCP/IP protocol to a suitably compatible application such as SeaPro and Rose Point Coastal Explorer (PC), MacENC (Macs) or iNavX (iPhone/iPad).

KEY FEATURES

- Easy to install IP54 black box solution
- Can be fitted to any AIS unit, instrument system or other device with an NMEA 0183 output
- WLN10 - 4800 baud NMEA data rate
- WLN10HS - 38,400 baud NMEA data rate
- Free iAIS App for iPhone, iTouch or iPad

SUPPLIED WITH

1m Power/Data cable, Wifi Antenna, software CD and User Manual



HSC100

Compass Sensor

Fluxgate compass to provide heading data to chartplotters, radar and instrument systems. Unlike most low cost heading sensors, the HSC100 outputs at 10Hz which is required for MARPA target tracking and accurate radar overlays.

KEY FEATURES

- Industry standard NMEA 0183 "HDG" output
- Gimballed to 45°
- Waterproof to IPx7
- Automatic calibration and manual compass offset feature
- Additional AD10 heading output for Furuno systems

SUPPLIED WITH

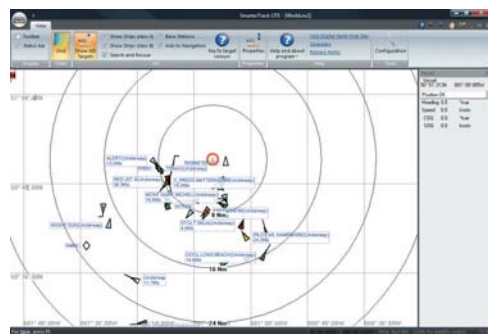
15m Cable and manual



SMARTERTRACK LITE

PC AIS Display Software

A simple but effective graphical AIS display program for any PC running Windows XP/Vista/7. AIS data is meaningless unless it shows where the targets are in the real world relative to your vessel. SmarterTrack LITE does this by plotting all surrounding AIS targets on a world map or, as you zoom in, on a radar type screen with variable range rings. Features include colour coded targets, user selectable target labelling, target course lines and fast AIS information recovery, making it the ideal introduction to AIS software.



KEY FEATURES

- Graphical AIS display software plots all detected AIS targets on world map
- Automatically switches to AIS "Radar" type display as you zoom in
- Colour coded AIS Targets with course lines
- Each AIS target shown with user selectable label
- Can be upgraded to full SmarterTrack package

SUPPLIED WITH

Installation CD-ROM and manual

SMARTERCHART 500 AIS COMBO

5in Colour Chartplotter With AIS

The SmarterChart 500 AIS Combo from Digital Yacht is the world's first 5in chart plotter to feature an inbuilt AIS receiver. With all the features of the SmarterChart 500 Chartplotter, it effortlessly plots your position on the electronic chart and also overlays all AIS targets typically within 20 miles of your boat.

Sharing the same 5in sunlight viewable display as the other Smarter Chart 500 plotters, the AIS Combo is fully compatible with C-Map MAX charts, providing unprecedented value and detail. As the AIS receiver is inbuilt you don't have to worry about integrating a separate receiver unit, simply connect to a suitable antenna or splitter and you're ready to go! AIS target range, like VHF range is dependent upon installation factors such as antenna gain, antenna height and size of ground plane. Ranges in excess of 20-30 miles should be possible if all of these factors are ideal.

KEY FEATURES

- World's first 5in chart plotter with built-in AIS
- Full C-Map MAX chart compatibility
- 12v or 24v DC supply
- Worldwide built-in electronic charts showing C-Map detail down to a level of two nautical miles
- High sensitivity, dual channel AIS receiver - BNC connector for antenna
- 50 channel internal GPS (external GPS available as option)
- Requires connection to existing VHF/AIS antenna (optional accessory) or splitter

SUPPLIED WITH

Mounting brackets, 1m power/data cable, sun cover, fuse holder and user manual



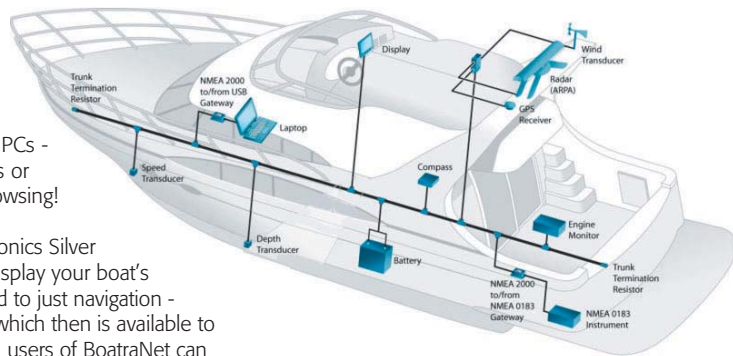
BOATRANET

Wireless Navigation Server

BoatraNet... the world's first wireless navigation server for boats!

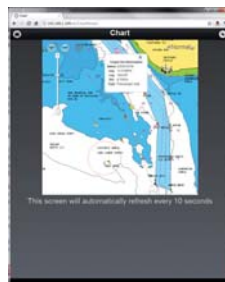
BoatraNet integrates with the boat's navigation system via NMEA0183 or NMEA2000 and creates a dynamic website for the boat that can be accessed even at sea without an internet connection. It creates a wireless network that works with iPhones, iPads, iPod Touch, Android Devices, Smart Phones, Laptops, Windows, LINUX and Mac OS X PCs - in fact any wireless enabled device with a HTML5 compliant browser. No special apps or difficult setup are required, simply connect to the Boatranet WiFi hot spot and start browsing!

Featuring a Navionics based chart plotter, Boatranet can be supplied with optional Navionics Silver embedded cartography for your region (Europe, USA, Canada or ROW) and will then display your boat's position, the next waypoint and any AIS targets on the detailed chart. But it's not limited to just navigation - photos, documents, music and video etc can also be stored using a USB memory stick which then is available to all connected devices. Compatible with Digital Yacht's high power WL510 system, local users of Boatranet can connect to marina hot spots to get internet access. What's more, Boatranet automatically shares the internet connection allowing all of the wireless devices on the boat to access the internet!



KEY FEATURES

- 10-32v DC
- Less than 2A consumption
- Intel Atom D410 processor
- 1Gb RAM
- LINUX Server OS
- Fully HTML5 compliant
- Apache Web Server
- 802.11n Wireless LAN
- Two NMEA0183 Ports
- Optional NMEA2000 Gateway



iNAVCONNECT

12v Wireless Router

All in one solution for setting up a wireless network on your boat. With direct connection to the boat's 12v or 24v DC, higher gain 5dB antenna and a rugged IP54 black box, iNAVConnect can be easily fitted to any GRP or wooden hulled vessel.



Pre-configured and optimised for connection to a Raymarine E Series network, allowing waypoints and routes to be instantly transferred between the iPhone/iPad and your Raymarine E Series plotter.

Full integration with Digital Yacht's WL510 long range Wi-Fi adaptor means everyone on board can share the long range internet connection when you arrive in port and connect to the marina's hotspot. The optional NMEA 0183 to TCP/IP interface allows it to wirelessly transmit all of the vessels NMEA 0183 data to any mobile wireless device running a navigation app compatible with TCP/IP data transfer.

KEY FEATURES

- Allows Navionics' "Plotter Sync" feature to wirelessly transfer routes and waypoints to E series plotter
- Integrates with Digital Yacht's WL510 long range Wi-Fi Adaptor
- Creates 802.11n wireless network with full WEP/WPA/WPA2 encrypted password protection
- Easy to install IP54 black box solution

SUPPLIED WITH

1m Power cable, 1m Network Cable, Wifi Antenna and User Manual

WL50

Wi-Fi Booster

Compact all-in-one system, ideal temporary mount solution for boats, caravans, RVs etc which should boost your Wi-Fi range to over 0.5 miles in perfect conditions. With simple plug & play connection, it comes with all software and drivers for Windows XP, Vista, Mac OS X 10.3 (and higher) and LINUX.*

KEY FEATURES

- Ideal solution for temporary installation
- 200mW Wi-Fi modem and high gain (8dBm) omni-directional antenna
- 4 x suction cup mount
- USB bus powered

SUPPLIED WITH

Mounting Suction Cups, Mounting brackets, 5m USB cable, Driver CD

* Not tested with all LINUX distributions, but all of the latest Debian-based distributions should include these drivers



WL400

High Power Wi-Fi System

Compact, all-in-one system supports 802.11b/g protocols as well as WEP and WPA encryption. Compatible with Windows XP/Vista/7, Mac OS X 10.3+ and LINUX* operating systems, we've seen ranges of up to 3-4 miles with this low cost system!

KEY FEATURES

- Ideal for semi-permanent installation
- Simple Plug and Play USB connection
- All in one 200mW Wi-Fi modem and high gain (12dBm) omni-directional antenna
- Industry standard 1in x 14 TPI thread mount
- USB Bus Powered

SUPPLIED WITH

5m USB cable, Driver CD



WL510

High Power Wi-Fi System

The WL510 allows boat owners to connect to Wi-Fi hot spots. With internet connectivity on board you can download the latest weather or chart updates as well as having a mobile office on board. The system has a compact 12v DC below deck 600mW booster/modem and an external 12dBm high gain antenna.

The WL510 modem connects to the PC via a regular RJ45 network cable for plug 'n' play, driver free operation on Windows XP/Vista/7, Mac OS X 10.3 (and higher) and LINUX operating systems. It supports 802.11b/g protocols as well as WEP/WPA/WPA2 encryption. Even if you already have Wi-Fi access you will still want to take advantage of the superior range and speed that this system will offer. Wi-Fi range depends on many factors, we've seen ranges of up to 4-6 miles with this low cost system.

KEY FEATURES

- Ideal for permanent installations and new builds
- Easy to set up and control from any browser via web-based interface
- 600mW Wi-Fi modem and high gain (12dBm) omni-directional antenna
- Industry standard 1in x 14 TPI thread mount

SUPPLIED WITH

WiFi modem, antenna with 10m cable, base mount, 1m network cable, User Manual



- Supplied with 10m of low loss coax cable
- 1m network cable can be extended with any CAT5 network cable up to 50m
- Requires connection to boat's 12v supply
- Windows XP/Vista/7 compatible
- Mac OS X and LINUX compatible



AIS Systems

AIS100/AIS100USB/AIS100PRO

AIS Receivers

These value priced, entry level AIS receivers are Digital Yacht's most cost effective solution for adding AIS to your boat. Three models are available, all with the same dual frequency receiver - the AIS100 with NMEA0183 output, the AIS100USB with USB interface, or NEW FOR 2012, the AIS100PRO with multiplexed NMEA0183 input plus USB interface. For use with existing AIS compatible chart plotters, such as the latest Garmin, Raymarine, Navico, Standard Horizon and Furuno units.

Connected to an existing VHF antenna via a splitter or to a dedicated AIS antenna, you can receive all AIS targets typically within 20 miles of your boat.



KEY FEATURES

- Low cost entry level AIS receivers
- High performance dual-channel AIS receiver for use with existing plotter and radar systems
- **AIS100** - NMEA0183 output
- **AIS100USB** - USB output
- **AIS100PRO** - NMEA0183 and USB output, multiplexed NMEA0183 input
- Requires VHF antenna, dedicated AIS antenna (optional accessory) or splitter
- Easy to install IP54 black box solution

SUPPLIED WITH

Integral mounting brackets, 0.75m power/data cable, AIS Lite software on CD and User Manual

AIS200N2NET

Tri-Output AIS Receiver

Top of the range AIS receiver with Tri-Output connectivity, featuring the very latest AIS technology to give unrivalled levels of reception and data throughput. With easy connections to all of the latest PC navigation software and chart plotters, the AIS200N2NET matches and exceeds the performance of other more expensive, big brand AIS receivers. With NMEA 2000, dual NMEA 0183 and USB outputs, interfacing and installation is simple and it supports all of the latest AIS message types including AIS SARTs, AtoNs and base stations. Connected to an existing VHF antenna (via a splitter) or dedicated AIS antenna, you'll receive all AIS targets within range - typically up to 30nm. Simple plug and play USB connection to a PC running Windows, Mac OSX or LINUX Kernels since V2.4.20, the AIS200N2NET is automatically mapped to an available "virtual" com port.

The AIS200N2NET has dual NMEA0183 outputs - one provides AIS data only, the other multiplexes AIS data with the NMEA 0183 data it receives on the NMEA input (4800 baud). With NMEA 2000 and USB output capability, the AIS200N2NET can provide AIS feeds to multiple equipment at the same time, great for larger more complex installations.



KEY FEATURES

- Latest generation AIS Technology - featuring a brand new AIS receiver design
- Tri-Output: NMEA2000, NMEA0183 and USB PC
- High performance dual channel AIS receiver for use with existing plotter and radar systems
- Rugged IPX5 aluminium housing
- USB Interface for simple plug and play connection to a PC
- Two high speed NMEA outputs (38,400 baud)
- Requires VHF antenna, dedicated AIS antenna (optional accessory) or splitter
- Multiplexed NMEA input for single NMEA GPS+AIS data output on all three ports
- Simple "fit and forget" black box solution

SUPPLIED WITH

Mounting brackets, 1m Power/Data cable, 1m USB Cable, 0.5m NMEA2000 cable, AIS Lite software on CD and User Manual

AIS LIFE GUARD

AIS Man Overboard Alarm

The world's first AIS Man Overboard Alarm designed to work with the new generation of AIS SARTs. Many existing AIS compatible chart plotters don't fully support AIS SARTs, but connect the AIS Life Guard to an AIS receiver and you can have a complete working AIS SART man overboard system. Operation is automatic, simply connect the AIS Life Guard to the AIS receiver's NMEA output and it will listen to all AIS traffic.

An AIS SART transmission is indicated by the internal alarm and red warning light, it can also be connected to an external alarm. Both AIS Message 1 and Message 14 are detected, as well as AIS SART test messages. It is compatible with all Digital Yacht AIS receivers and transponders and it is designed to operate on 12v or 24v DC systems.



KEY FEATURES

- World's first dedicated AIS Man Overboard Alarm system
- Listens to AIS data on NMEA0183 Input
- Alarms when AIS SART message 1 and 14 are detected
- Internal 95dB buzzer with option to drive external alarm (not supplied)
- Audible and Visual Alarms
- Push button to silence alarm (short press) and reset alarm (long press)
- Easy to install IP54 black box solution

SUPPLIED WITH

Integral mounting brackets, 0.75m Power/Data cable and User Manual

iAIS

Wireless Tri-Output AIS Receiver

The world's first AIS receiver that links wirelessly with the latest iPhone, iPad and iPod devices. Consisting of a high performance dual channel AIS receiver and an integrated 802.11b+g wireless access point, the iAIS also multiplexes any other NMEA data available - GPS, depth, speed and wind etc., all of which is available to any compatible application. By using the boat's own GPS, even an iPod Touch or iPad that does not have an internal GPS can now be used for navigation and superior performance will also be seen on an iPhone.

The iAIS also has an NMEA0183 and USB interface so that you can output data to a PC or a dedicated plotter. The free iAIS app from the App Store is a simple AIS display program, for more advanced use DigitalYacht recommends the iNavX app (www.inavx.com). Compatible with Navionics charts, iNavX provides a complete set of navigation functions that turns your Apple device into a full function chartplotter with waypoints, route and tidal data and GRIB weather data overlay.



KEY FEATURES

- Tri-output - WiFi, NMEA 0183 and USB
- Integrated 802.11b+g wireless access point
- Fully compatible with iNavX navigation application for Apple mobile devices
- Simple "fit and forget" black box solution
- Requires VHF antenna, dedicated AIS antenna (optional accessory) or splitter

SUPPLIED WITH

Mounting brackets, 1m Power/Data cable, 1m USB Cable, iAIS app (from Apple App Store), software CD and User Manual

AIT2000

Black Box AIS Class B Transponder

This ultra-compact Class B Transponder uses the latest AIS Transponder technology to squeeze more performance and interfacing options in to a housing that is half the size of the previous generation. Featuring a remote silence button option, two NMEA 0183 Inputs and Outputs, NMEA 2000 and USB connections, the AIT2000 is the perfect AIS transponder solution for all light marine vessels up to 300 tons. Configuration of your vessel's fixed data such as MMSI, call sign, boat name, dimensions etc. is made easy with the Windows and Mac compatible proAIS2 software included. As well as transmitting your own vessel's position so that other AIS equipped vessels know where you are, the AIT2000, when connected to an existing VHF antenna (via a splitter) or dedicated AIS antenna, will receive all AIS targets within range of your boat - typically up to 30NM.



KEY FEATURES

- Easy to install black box solution
- Latest generation AIS technology featuring a brand new AIS transponder design
- Ideal for use with existing plotter and radar systems
- Built-in high performance 50 channel GPS receiver (ideal also as a backup GPS)
- USB Interface for simple plug and play connection to a PC or Mac
- Includes N2Net interface and cable for connection to NMEA 2000 network
- 2 x NMEA0183 outputs - one high speed (38,400 baud) with AIS + GPS + multiplexed data and the other 4800 baud for GPS output to DSC VHF Radio
- Comes complete with GPS antenna with integral 1"x14TPI thread mount
- Requires VHF antenna or dedicated AIS antenna (available as optional accessory) or splitter (SPL250)
- Remote Silence Switch option
- Supplied with programming software for user programming

SUPPLIED WITH

0.75m Power/Data cable, 0.75m USB cable, 0.75m N2Net cable, GPS Antenna with 7.5m cable, AIS software on CD and User Manual

ANT200

AIS Smart Antenna Receiver

Perfect "all in one" AIS Smart Antenna solution for small boats, particularly RIBs, sports boats and small yachts, where dry space to mount black box AIS units is limited.

KEY FEATURES

- High performance dual channel AIS receiver for use with existing chartplotter and radar systems
- Multiplexed NMEA input for single NMEA GPS
- High speed (38,400 baud) NMEA output of both GPS and AIS data to chartplotter, radar etc
- Integral 1in x 14 TPI thread for standard VHF mounts

SUPPLIED WITH

15m Power/Data cable, AIS Lite software, User Manual



uAIS

USB Powered AIS Smart Antenna Receiver

Perfect "all in one" solution for anyone using a Laptop on a small boat that wants to receive AIS data. Uses standard Windows XP/Vista/7 drivers and is automatically mapped to an available "virtual" com port, which your PC software can read. Also compatible with Mac OS X and all LINUX Kernels since V2.4.20. For use with any AIS compatible PC navigation software, such as the latest SmarterTrack, MaxSea, SeaPro, Nobeltec and RosePoint applications.

KEY FEATURES

- Integral 1" x 14 TPI thread for fixing to standard VHF mounts
- Simple plug and play USB connection to a PC
- High performance dual channel AIS receiver
- High speed NMEA output (38,400 baud)

SUPPLIED WITH

5m USB cable, AIS Lite software, User Manual



AISnet

Internet Base Station

AIS base station receiver for use at home or in the office. With the same high performance dual channel AIS receiver as the rest of the Digital Yacht range, AISnet features an ethernet socket so that you can connect it to your broadband router and send AIS data to an online AIS tracking service. There are now a large number of websites which offer a view of AIS equipped vessels on a background chart allowing users to check the position and identity of ships and yachts. If you are close to the coast and you would like to contribute your data to one of these sites, simply register with the company and they will give you an IP address and port number.

It takes seconds to program the IP address and port into AISnet, which then start sending your local AIS data across the internet to be displayed on the site. It is also possible to view the AIS data on your PC using the free SmarterTrack Lite software included with AISnet. Simply plug the USB connector into your PC and the AIS data will appear on your PC and still be transmitted over the internet.



KEY FEATURES

- Integrated ethernet network controller for supplying AIS data to AIS websites
- High performance dual channel AIS receiver
- Simple configuration via free setup program
- USB Interface for simple plug and play connection to a PC
- Requires VHF antenna, dedicated AIS antenna (optional accessory) or splitter
- Simple "fit and forget" black box solution

SUPPLIED WITH

UK/Euro/US mains adaptor, 1m USB Cable, AIS Lite + Setup software on CD and User Manual

SPL250

AIS Antenna Splitter

Removes the need for a separate VHF antenna for an AIS transponder and allows a single antenna to be shared with a VHF radio. This is the only VHF antenna splitter suitable for use with two transmitting devices. Compatible with all Class B AIS transponders and AIS receivers.

KEY FEATURES

- Saves installation time and cost
- Guarantees priority to VHF voice and DSC radio operation even if the splitter power supply fails
- Additional output for FM radio antenna connection

SUPPLIED WITH

RF leads for connection with AIS transponder, VHF radio and a power lead



HA156

AIS VHF Stub Antenna

This compact, ultra lightweight 0.2m antenna is optimised for AIS use and is ideal for use with all AIS receivers and transponders.

Important Note: The 20m cable fitted to this antenna acts as a tuned ground plane and should not be shortened or lengthened.

KEY FEATURES

- Tuned for optimum gain and performance at AIS frequencies
- Unobtrusive design for mounting at deck level
- Can be used as emergency backup VHF aerial
- Bayonet (BNC) fitting for quick connection

AA10

AIS VHF Whip Antenna

A 47cm whip antenna which is ideal if you want a dedicated AIS antenna instead of using your current VHF antenna with a splitter. It is supplied with 10m cable and fitted with a neat fast fit coupler, which allows the cable to be routed without having to cut off and reconnect the plug.

KEY FEATURES

- Integral 1in 14TPI industry standard VHF mount
- Miniature FME connector (with BNC adaptor) for easier routing of the cable through the boat
- Can be used as an emergency backup VHF antenna



Commercial AIS Systems

DIGITAL DEEP SEA

Introduction To Digital Deep Sea

Digital Deep Sea is Digital Yacht's sister division that designs and manufactures products to meet the needs of the fishing, workboat, naval, deep sea, superyacht and commercial sectors. Digital Deep Sea systems are designed for demanding professional conditions and minimum in service costs, offering great performance and terrific value for the professional mariner.

DIGITAL DEEP SEA CLA1000

Class A AIS Transponder

A Class A AIS transponder is a mandatory fit on all commercial vessels over 300 tons and is also required on many smaller passenger carrying vessels. The CLA1000 meets all the global approvals and can consequently be fitted on any IMO vessel. It provides an automatic transmission of the vessel's own position, speed and heading to other AIS equipped vessels within VHF range.

It features a large LCD display which lists all AIS targets within range and can also provide a graphical target plot. The CLA1000 provides alarms for Closest Point of Approach (CPA) and Time to Closest Point of Approach (TCPA) for any potential targets on a collision course. Measuring just 195mm x 105mm, the CLA1000 is currently one of the world's smallest Class A AIS systems available.

It also incorporates a universal pilot plug which allows quick and easy connection of a PC running electronic chart plotting software, allowing GPS and AIS data to be overlaid onto the chart. Digital Deep Sea have developed their own range of PC programs and accessory cables which allow quick and easy programming of static data into the transponder without the use of the dedicated display.

KEY FEATURES

- Fully approved and MED Wheel Marked Class A AIS transponder
- Full Class A functionality with dedicated controller
- Ultra compact design with 240x128 pixel backlit LCD display
- Automatic transmission of vessel's own position, identity, speed and heading to other AIS equipped vessels within VHF range
- Easy soft key and rotary encoder operation
- Positively identify other AIS targets with name, call sign and MMSI data
- See an overlay of targets on a graphical plot



- Automatically calculate closest point of approach (CPA) and time to closest point of approach (TCPA)
- Pilot plug for PC connections
- Remote break out box for interfacing with ext alarms, ECS and ECDIS systems
- Inbuilt GPS with GPS antenna supplied

SUPPLIED WITH

PC tracking software, GPS antenna. VHF antenna required (optional accessory)

DIGITAL DEEP SEA ARX100

Class B AIS Receiver

Suitable for non-SOLAS mandate vessels, the ARX100 offers exceptional sensitivity and target acquisition capability. With USB and NMEA output, it can be integrated with compatible chartplotter, radar and PC systems and AIS data overlaid onto the chart. Connect the NMEA0183 (4800 baud) output of your GPS to the ARX100 and it will automatically multiplex (merge) the slower GPS data with the high speed AIS data and transmit everything on one high speed NMEA output, ideal for systems with limited available NMEA inputs.

KEY FEATURES

- NMEA0183 (38400 baud) output
- USB PC connection
- 4800 baud NMEA GPS input
- Multiplexes GPS and AIS input
- Requires suitable VHF antenna



Mounting brackets, 1m Power/Data cable, 1m USB Cable, AIS Lite software, User Manual

DIGITAL DEEP SEA PILOT PLUG CABLE

Class A PC Pilot Plug USB Connection Cable

The Digital Deep Sea Pilot Plug Cable allows Commercial Pilots etc to connect their laptop PC to a Class A Transponder via its Pilot Plug. This cable also allows some Class A transponder models to be configured with the static AIS data and / or mandatory voyage data that must be programmed in before starting a passage.

KEY FEATURES

- Low cost simple solution
- 1.8m cable
- Bidirectional data connection
- Confirms to the IMO SN/Circ.227
- Fully NMEA 0183 compatible (differential RS422)
- Built-in indicator lights flash to show data is being received and transmitted
- Easy plug and play connection to most computers (Windows/Mac/LINUX)



SUPPLIED WITH

1.8m Cable, Driver CD with SmarterTrack Lite AIS software, User Manual

DIGITAL DEEP SEA CLB1000

Class B AIS Transponder

Featuring dual NMEA and USB connections, remote silence button option, four status LEDs and rugged vibration-proof mounting brackets the CLB1000 is an ideal AIS transponder solution for all light marine vessels up to 300 tons. When connected to an existing VHF antenna via a splitter or dedicated AIS antenna the CLB1000 will transmit your vessel's position so that other AIS equipped vessels know where you are as well as receive all AIS targets within range of your boat.

Configuration of your vessel's fixed data - MMSI, call sign, boat name, dimensions etc is made easy with the included Windows compatible proAIS software. The unit can be connected to a PC running suitable navigation software or a dedicated chart plotter. With simple plug and play USB connection to a PC, it uses standard Windows XP/Vista/7 drivers and is automatically mapped to an available "virtual" com port, which your PC software can read. Also compatible with Mac OS X and all LINUX Kernels since V2.4.20.



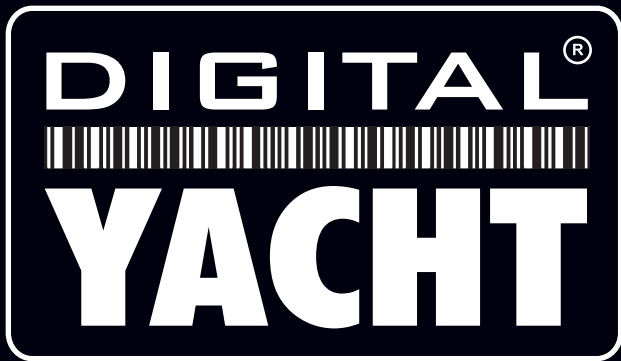
The CLB1000 automatically outputs AIS and GPS data together on both the USB and NMEA ports, plus it will also retransmit (multiplex) any valid NMEA0183 data that it receives on its NMEA input.

KEY FEATURES

- High-performance Class B AIS Transponder sends and receives AIS data
- Easy to install black box solution
- Ideal for use with existing plotter and radar systems
- Built-in GPS receiver (ideal also as a backup GPS)
- USB Interface for simple plug and play connection to a PC
- High speed 38,400baud NMEA output compatible with industry standard plotters
- Remote silence function
- Supplied with user programming software (Except US where dealer programming required)
- Requires VHF antenna, dedicated AIS antenna (optional accessory) or splitter

SUPPLIED WITH

Mounting brackets, 0.75m Power/Data cable, 0.75m USB cable, Low Profile GPS Antenna with 7.5m cable, AIS software and User Manual



UK HEAD OFFICE

**Need to
contact us:**

Tel: 01179 554474

Intl Tel: +44 1179 554474

Or you can e-mail us:

sales@digityacht.co.uk

Or write to us at:

Marine House
City Business Park
Easton Rd
Bristol
BS5 0SP. UK

Find us on YouTube, Twitter & FaceBook too

DIGITAL YACHT USA

Tel: +1 978 277 1234

DIGITAL YACHT CHINA

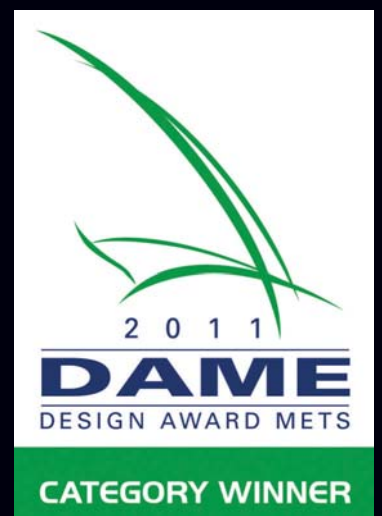
Tel: +86 21 658 70030

DIGITAL YACHT NZ

Tel: +64 9 376 5647



**Innovation Award
2011 NMEA
BOATraNET**



**Electronic's Category
Winner 2011
Digital Yacht iAIS**

www.digityacht.co.uk